



# PivotEQ — Concur Expense Add-On App

Maximize Commercial Card Program Value - Starting with Card Reconciliation

## INTRODUCING PivotEQ:

- Compares purchases on statements to expense reports. **Automatically**
- Notifies employees with outstanding card purchases. **Automatically**
- Continues purchase and expense report comparisons. **Automatically**
- Determines correct accounts for accrual entries. **Automatically**
- Creates accounting entries, and correcting entries. **Click a Button**

## PivotEQ Add-On Value:

- Visibility: Reconciliation, expense reporting, and accounting
- Financial Risk: Lowers costs and improves accounting accuracy
- Productivity: Eliminates manual tasks every step of the way
- Experience: Admins and employees alike dig the new process
- Adaptable: Supports multiple card programs



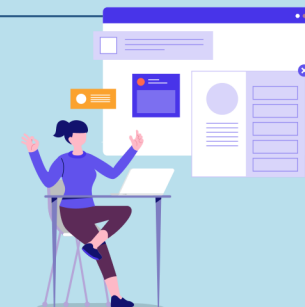
## UNDERSTAND THE PRODUCTIVITY IMPACT: WHAT IS THE CURRENT CARD RECONCILIATION PROCESS

How do you, and how long does it take, to:

- Compare card transactions to expense report entries
- Get employees to submit outstanding expenses on reports
- Create accounting entries and reconcile accruals each cycle

## CALCULATE THE COSTS: DETERMINE THE POSSIBLE ROI

- Salary.com shows average AP pay at \$26 per hour
- So, the total hours each month is about xxx for you?
- That equates to  $xxx * 26 = \$x,xxx$  per month!



## IT'S NO FUN: FOR ADMINS OR EMPLOYEES!

- Nobody likes being the expense report police
- Chasing, or being chased, is annoying at best
- And yet, temporary accrual work is required for the books

## IMAGINE:

### THE WORK IS ALL AUTOMATED WITH PIVOTEQ

- The manual process work is eliminated
- Chasing employees is not a thing
- Accounting transactions are prepared for you

